

# **UltraView Pro**

## **Software User Guide**

Version 1.1

# Contents

Chapter 1 Introduction .....	2
Chapter 2 Installation .....	3
Chapter 3 Using UltraView Pro .....	5
3.1 Starting the Program .....	5
3.2 Main Window and Item Feature .....	6
3.3 Accessing the Camera .....	10
3.4 Recording / Playing Video .....	16
Chapter 4 Configuring UltraView Pro .....	21
4.1 Configuring the eMap View Setting .....	21
4.2 Configuring the System .....	26
4.3 Event Configuration .....	27
4.4 Changing System Language .....	31
4.5 Terminating Operation .....	32
Chapter 5 Using IPFinder .....	33

# CHAPTER 1

---

## INTRODUCTION

This *Software User Guide* provides detailed instructions on operating UltraView Pro, a customized software application with a user-friendly interface allowing you to access and control your camera(s). You can connect up to 32 cameras to monitor different places and record events for each camera. With UltraView Pro, you can also change some basic settings of the camera, such as schedule profiles and motion detecting. In addition, if your camera supports advanced features, such as audio or pan/tilt function, you can use these functions through the control panels of UltraView Pro.

To use UltraView Pro, you have to install it in your computer. It is recommended to use a high performance computer if you want to connect multiple cameras simultaneously.

- **Platform:** Microsoft® Windows® XP/Vista\*, and Windows 7
- **Hard Disk:** 80GB or above
- **Resolution:** 1024x768 or above
- **Hardware Requirement**
  - 1~8 cameras: Intel Core 2 Duo; 2GB RAM
  - 9~32 cameras: Intel Core 2 Quad; 4GB RAM

\* For Windows Vista users: please go to User Accounts and Family Safety > User Accounts > Turn User Account Control on or off, then uncheck the “Use User Account Control (UAC) to help protect your computer checkbox. Restart your computer to validate the setting. For additional information of User Account Control, please go to <http://www.microsoft.com/windows/products/windowsvista/features/details/useraccountcontrol.aspx>

# CHAPTER 2

---

## INSTALLATION

**IMPORTANT!** Before installing the program, make sure that the Avira AntiVir (the anti-virus application) is not installed in your computer system. Otherwise, UltraView Pro might be malfunctioned while operating in your system.

1. Insert the Installation CD-ROM into the CD drive of your computer to initiate the Auto-Run program.

The Auto-Run screen provides the following buttons:

- Quick Guide
- Advanced Guide
- Software Manual
- IPFinder
- Install Software
- Browse
- Exit

2. Click **Install Software**, and the setup wizard appears to help you complete the installation step-by-step.

**NOTE** To use UltraView Pro, you must have Microsoft .NET Framework 2.0 installed in the computer. The setup wizard will detect it and, if the program is not installed yet, ask you to install it during the process of installing UltraView Pro.

Microsoft Windows Installer 3.0 or above is a required component to install UltraView Pro. For more information of the required component during installation, please visit the Microsoft support Website.

3. Click **Install**. The InstallShield Wizard starts to install UltraView Pro to your computer.

The Status bar indicates the installation process.

4. When done, click **Finish** to complete the installation.

You will see the program icon appeared on the desktop of your computer.



UltraView Pro

**TIP** The IPFinder program will be installed in your computer simultaneously when you install UltraView Pro.



IPFinder

For more information of using IPFinder, refer to *Chapter 5* or the *User Guide* provided by your camera.

# CHAPTER 3

---

## USING ULTRAVIEW PRO

### 3.1 Starting the Program

1. Click **Start → Programs → UltraView Pro → UltraView Pro.**

Alternatively, you can start the program by double-clicking the program icon on the desktop of your computer.

2. On the login window, enter the **User name/Password** and click **OK** to login.

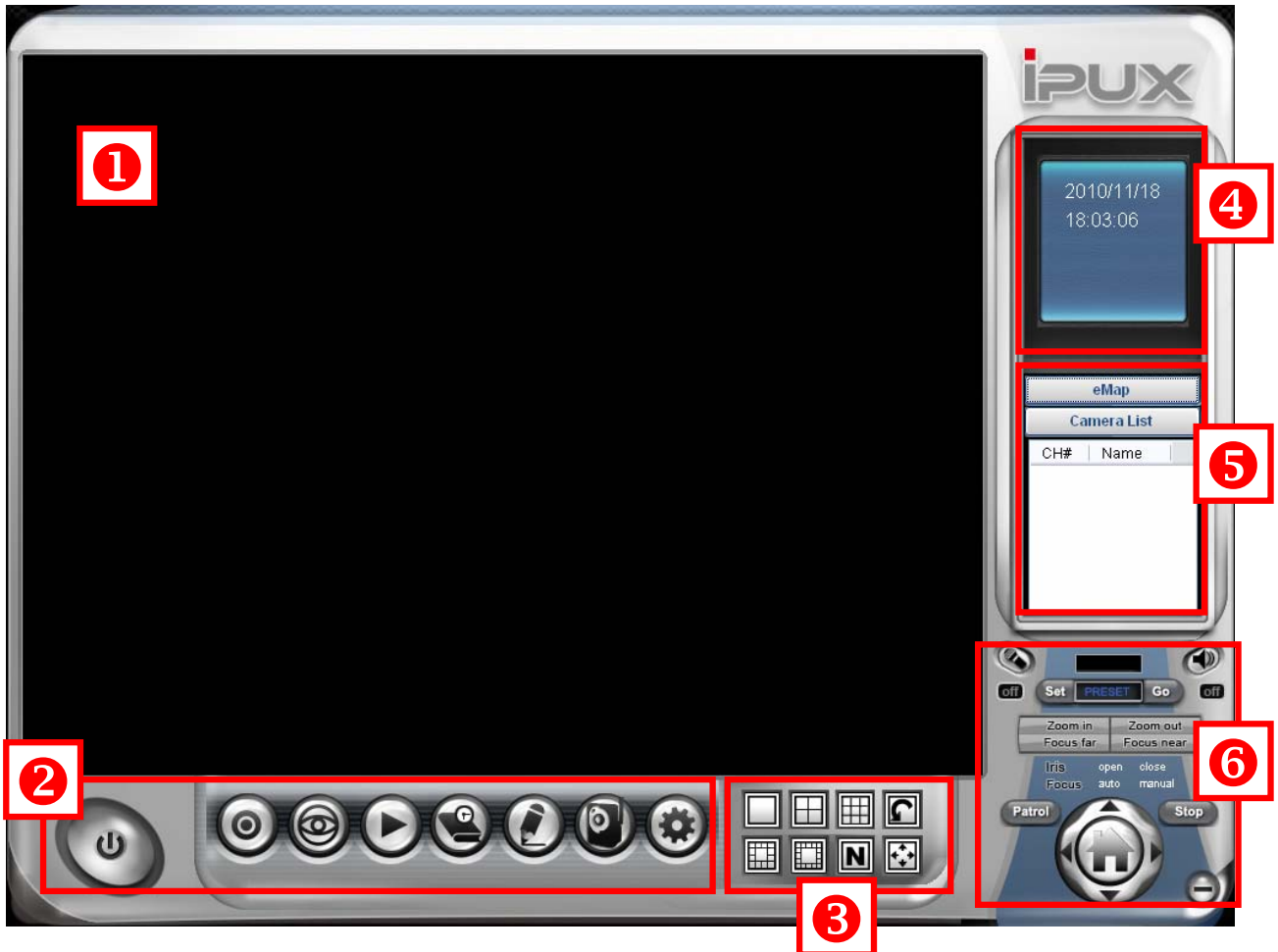
If this is the first time you start the program and login, use the default **User name / Password: *admin / admin.***



**NOTE** For security purpose, you are highly recommended to change the default user name and password after login. For more information, see the *Configuring the System > User Management* section.

## 3.2 Main Window and Item Feature









When you start and login to UltraView Pro, the Main window will display as below:






The Main window provides you with the information on operating the system, as well as the control panel such as the Quick Launch buttons, and so on.







**NOTE** UltraView Pro requires the resolution setting up to 1024 x 768. For best view of the application, you are recommended to configure the resolution setting to 1024 x 768 or higher; otherwise, it cannot be displayed on the screen when launching the program.

- 1 **Live View Window** displays the live video of the connected camera(s).
- 2 **Quick Launch Buttons** are located below the Live View Window, providing you with the following quick-launch functions:

Button	Function
	Click to select <b>Logout</b> or <b>Close</b> UltraView Pro.
	Click to select <b>Restore Recording Type, All Continuous Recording,</b> or <b>Stop All Recording.</b>
	Click and then select to display the <b>View Setting</b> window, switch to the <b>eMap View</b> window, or check the <b>Camera Status.</b>
	Click to display the Playback window.
	Click to display the Schedule Configuration window.
	Click to configure the event settings: <b>Event Server, Address Book,</b> and <b>Event Trigger.</b>
	Click to configure <b>Device Setting</b> and <b>Recording Setting.</b>
	Click to set the <b>Account, Language,</b> and <b>System Setting;</b> or view the <b>Version</b> or the program.

- 3 **Camera View Mode** buttons in this area allow you to switch the camera view mode.

Button	Function
	Display the connected camera(s) in single camera view mode.
	Display the connected camera(s) in quad view mode.
	Display the connected camera(s) in 3 x 3 grid view mode.






	Display the connected camera(s) in 13-camera view mode using a split window. The first camera is displayed as the major view.
	Display the connected camera(s) in 17-camera view mode using a split window. The first camera is displayed as the major view.
	Display the connected camera(s) in N x N grid view mode, supporting up to 32 cameras.
	Display the live view of the selected camera in full screen mode. Press the ESC key on the PC keyboard to resume the Main window.
	<p>Automatically switch the live view of each connected cameras in single camera view mode by 30 seconds*. Click once to start and click again to stop.</p> <p>* The auto-switch time is set as 30 seconds by default, which can be changed by clicking the  → <b>System Setting</b> and then change the value from the pull-down list of the <b>Auto Switch time interval</b> option.</p>

**4** **System Information** displays the system information, including the date and time, and the available storage space of the system.

**5** **Live View Status** provides the status of live view mode, including **Camera List** and **eMap**.

- **Camera List** displays the status of the connected cameras. If multiple cameras are connected, you can switch to the live view of each camera by simply selecting the camera from the list.
- **eMap** allows you to select the desired camera to the view from the map easily. Please note that you have to set up the eMap for monitoring in advance.


**6 Camera Control Buttons** provides the control buttons that allow you to control the selected camera.

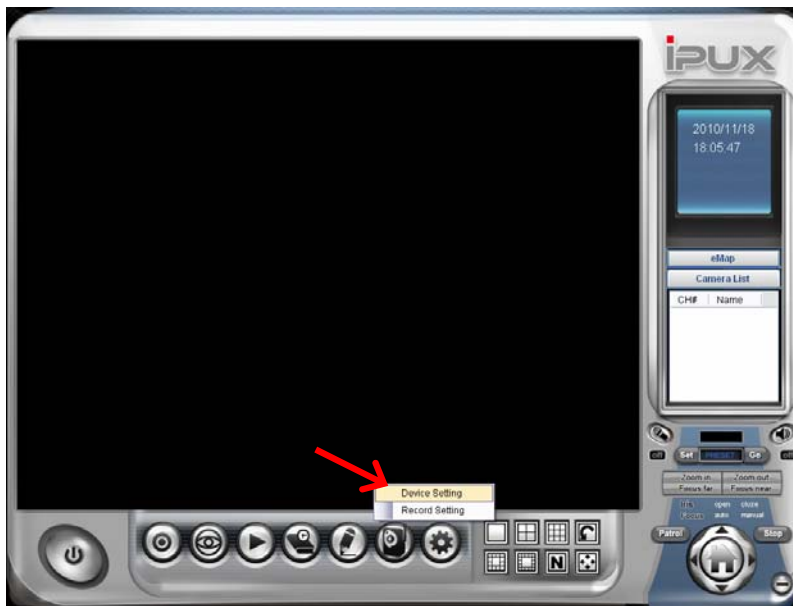
Button	Function
	<p><b>Talk On/Off.</b> Click to enable/disable the speaker function of the connected camera. This option is available only in single camera view mode.</p>
	<p><b>Listen On/Off.</b> Click to enable/disable the microphone function of the connected camera. This option is available only in single camera view mode.</p>
	<p>If the connected camera features pan/tilt functions, you can use this control panel to set the preset positions (up to 8 positions). Once configured, you can move the camera lens to the desired position quickly.</p> <p>To set the preset positions, adjust the camera lens to the desired position using the Navigation buttons, and then select the position number (1~8) from the Set button.</p> <p>To move to the preset position, simply select the position number (1~8) from the Go button.</p>
	<p>Navigation Buttons (Left/Right/Up/Down/Home). If the connected camera features pan/tilt functions, the Navigation buttons allow you to move the camera lens position. Clicking the Home (center) button will move the camera lens to the assigned home position.</p>
	<p>The <b>Patrol/Stop</b> buttons are used to enable/disable the swinging function of the camera. Click <b>Patrol</b> to start patrolling through the preset positions once. Click <b>Stop</b> to stop patrolling.</p>

### 3.3 Accessing the Camera

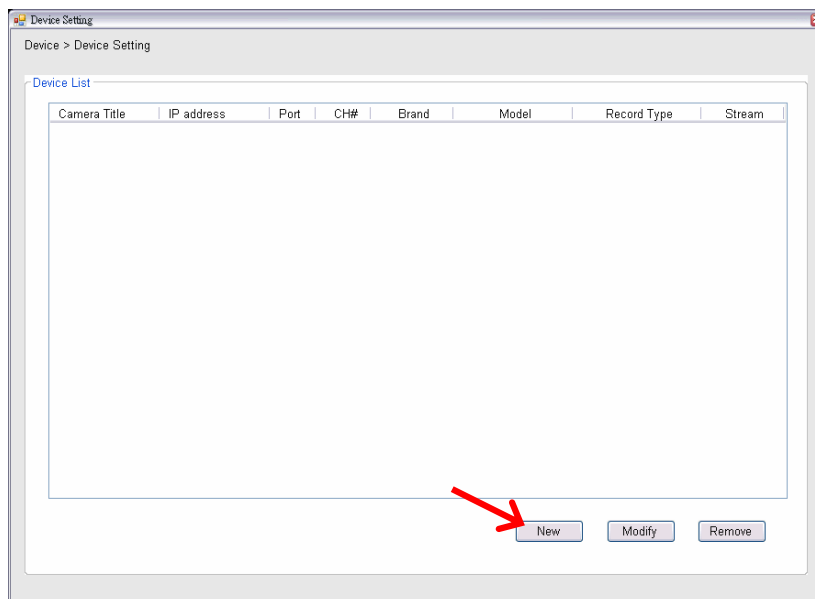
Before you can access the camera, you have to add the camera to the system.

#### ■ Adding a Camera

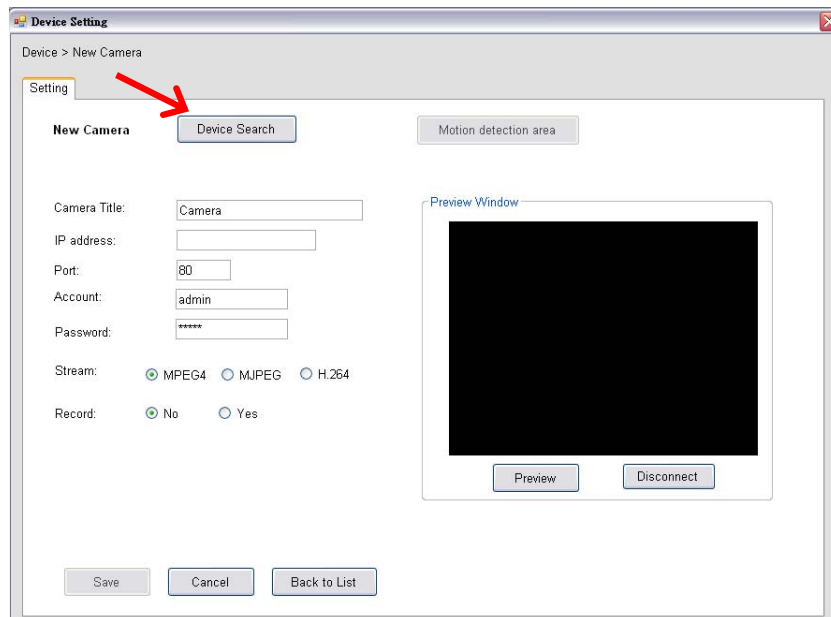
1. Click the  button and select **Device Setting** to display the Device Setting window.



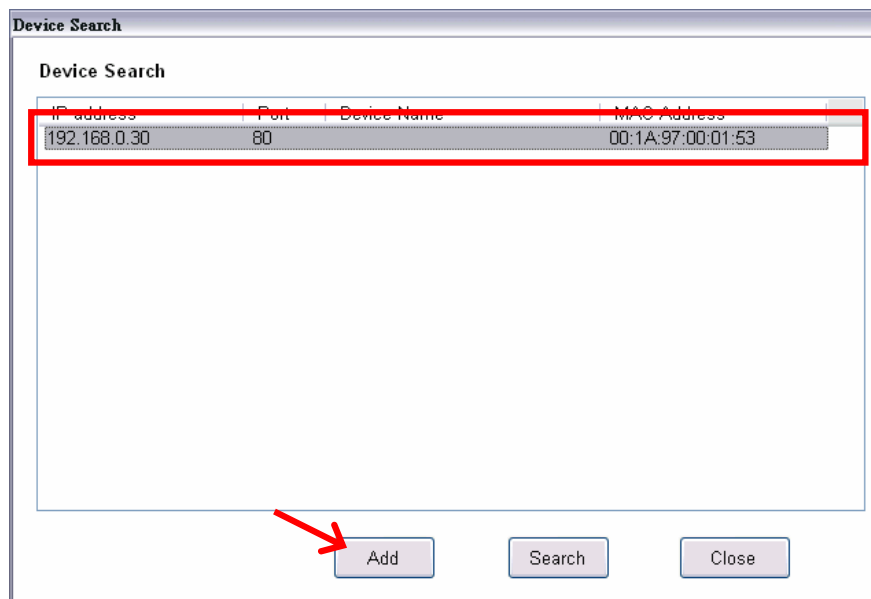
2. Click **New**.



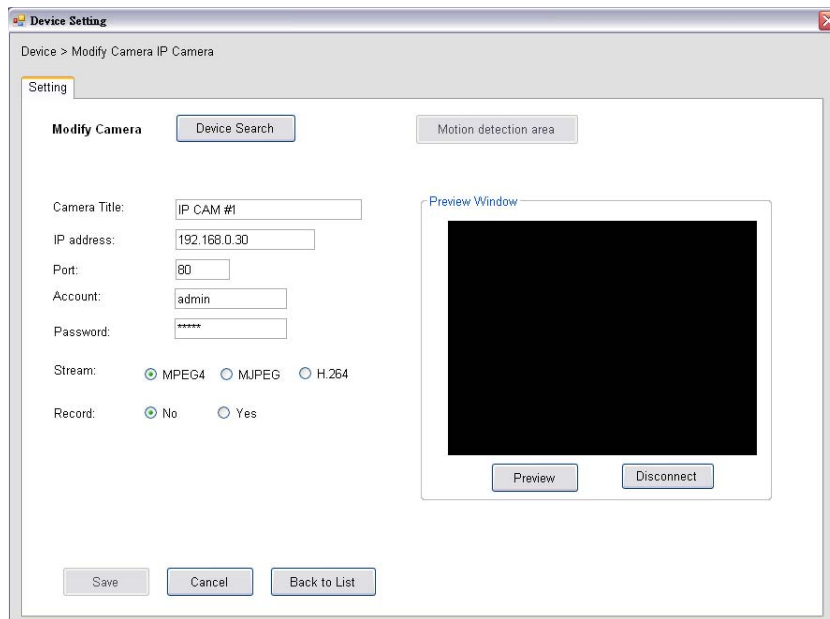
3. Click **Device Search** to search the camera(s) within your network.



4. Click **Search** to find the IP address of the connected camera(s). When search is finished, select the camera and click **Add**.



5. The information of the camera will be displayed on the window.



Option	Description
<b>Camera Title</b>	You have to assign a descriptive name for the camera.
<b>IP Address</b>	Display the IP address of the camera.
<b>Port</b>	Display the port path of the camera.
<b>Account</b>	Display the user name for accessing the camera.
<b>Password</b>	The password for accessing the camera will not be displayed.
<b>Stream</b>	Select the stream type as <b>MPEG4</b> , <b>MJPEG</b> , or <b>H.264</b> .
<b>Record</b>	Select <b>Yes</b> or <b>No</b> to set up recording function of the camera.
<b>Preview Window</b>	This window allows you to preview the image of the camera. <b>NOTE</b> You MUST click <b>Preview</b> to display the image before clicking <b>Motion detection area</b> and <b>Save</b> to complete the camera installation; click <b>Disconnect</b> to stop previewing.

- When done, click **Save** and then click **OK** to return to the Device Setting window. The added camera will be displayed in the Device List.
- Click the “X” button on the Device Setting window to return to the Main window. The image of the camera will be displayed.

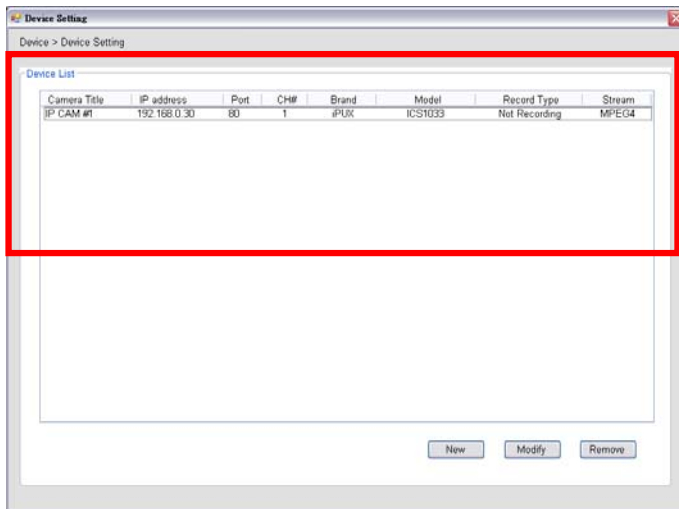


## ■ Editing / Deleting a Camera

Since you have added camera(s) to the system, you can select one to edit or remove.

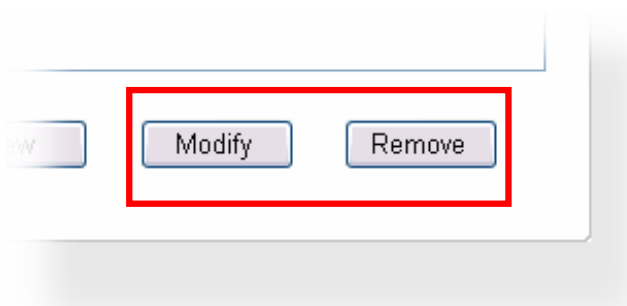
Click the  button and select **Device Setting** to display the Device Setting window.

1. On the Device Setting window, the connected camera(s) will be displayed in the Device List.




2. **To delete the camera:** select the desired one and then click **Remove**. When prompted, click **Yes** and then select **OK** to confirm deletion.


**To change the configuration of the camera:** select the desired one and then click **Modify**. The Modify Camera window will appear that allows you to change the configuration of the camera. When completed, click **Preview** to display the image before clicking **Save** and then select **OK** to return to the Device Setting window.

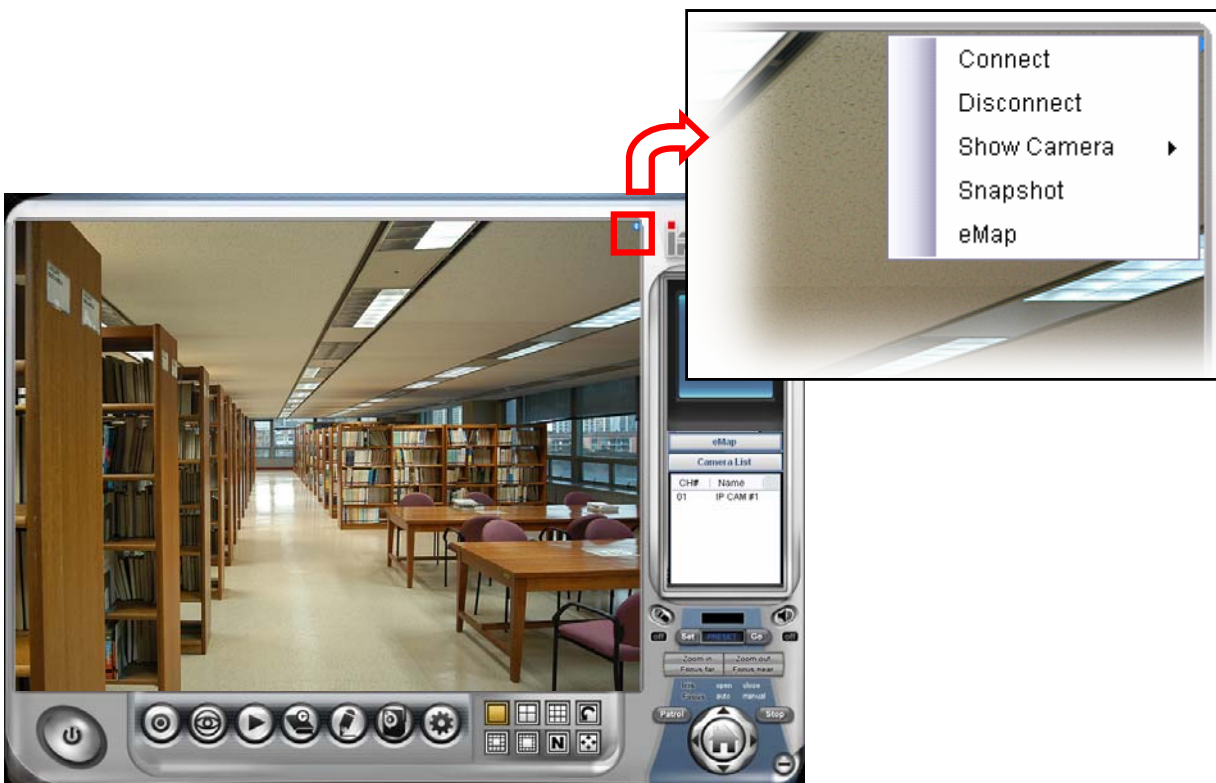


## ■ Viewing Image of the Camera

Since you have added camera(s) to the system, the image of the selected camera(s) will be displayed on the Live View Window automatically. You can view a maximum of 32 cameras simultaneously. Additionally, you can select one-camera or other view mode to display the video from the Camera View Mode buttons.

For example, if you use only one camera, select single camera view mode (  ), and the Live View Window will display the view as below. You can select the other modes according to your need.


The **Information icon** (  ) on the top-right corner of the window provides you with the options to connect/disconnect the camera, select a camera to be displayed in the window, capture a still image of the camera live video, or switch to eMap mode. Click the Information icon to pop up the shortcut menu and select the desired option.



## 3.4 Recording / Playing Video

You have to assign the target folder for saving the recorded files before recording.

### ■ Configuring the Recording Settings

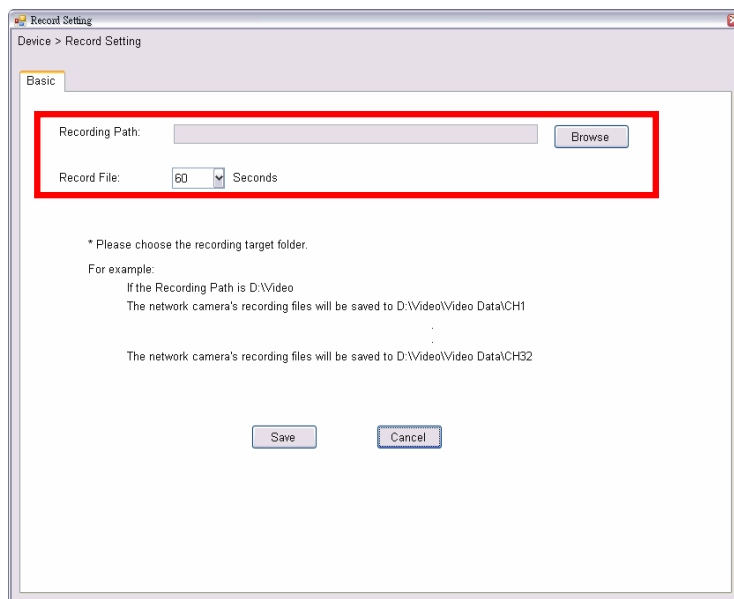
1. Click the  button and then select **Record Setting**.



2. To assign the target folder for saving the recorded files, click the **Browse** button next to the **Recording Path** option, and then select the desired directory. When completed, click **Save**.

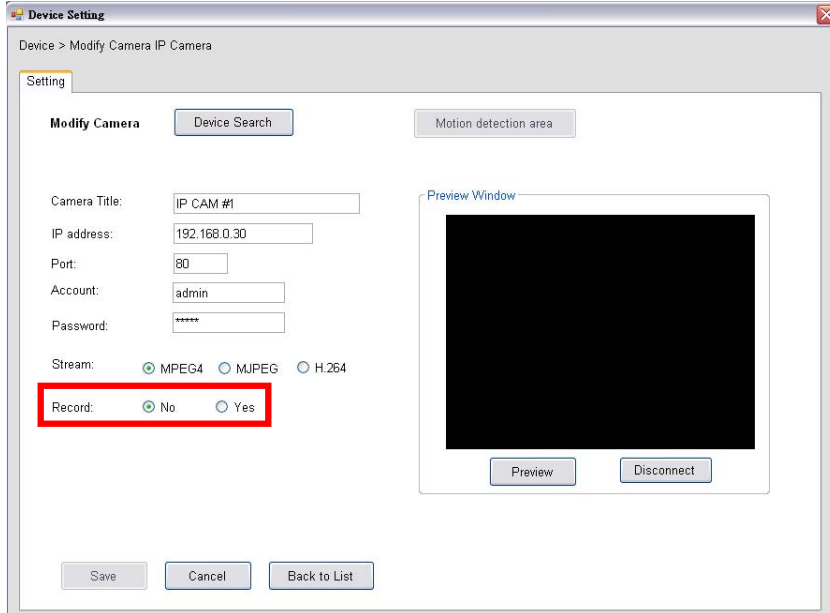
To change the time of recording, select the desired time setting from the **Record File** pull-down menu.


When completed, click **Save**



## ■ Enabling / Disabling Recording

While you are adding/editing the camera, you can enable the recording function for the camera by selecting the **Record** option.



Alternately, you can set all cameras to start/stop recording when you connect multiple cameras. Click the  button and select **All Continuous Recording** to set all cameras to start recording, or select **Stop All Recording** to set all cameras to stop recording.




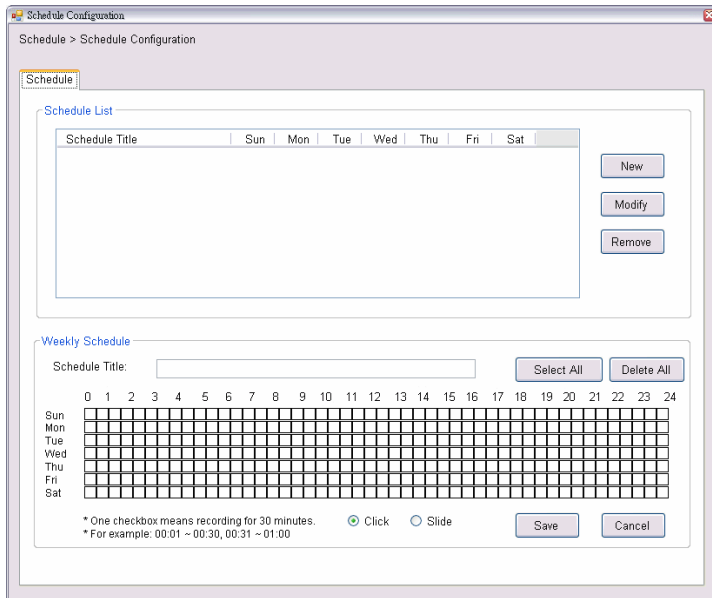
Since you have enabled the recording function of the camera, it will automatically start recording and save the video clips. The recording time of each file is set to 60 seconds by default.

**NOTE** The system will automatically delete the oldest files when storage space is running out.

## ■ Setting up Schedule for Recording

The system features the schedule recording so that you can set up the schedule to record as you need.

Click the  button to display the Schedule Configuration window, which allows you to configure the recording schedule.



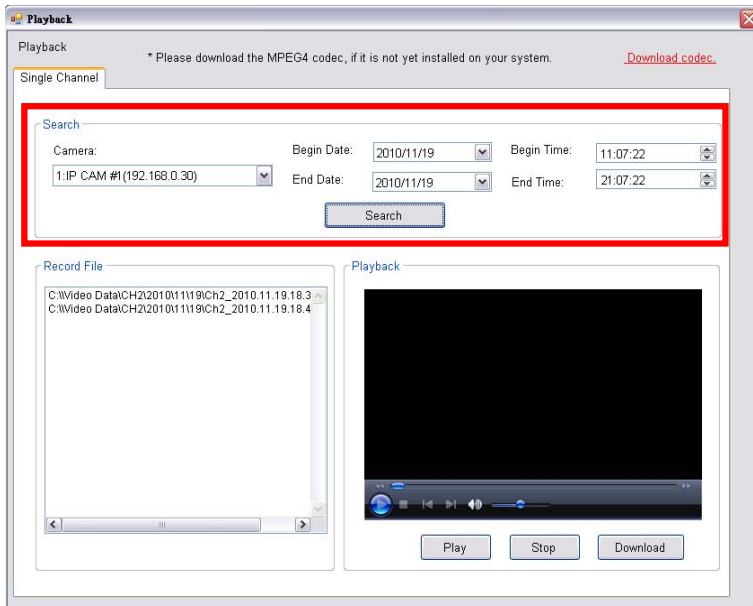
1. Click **New**, and then enter the Schedule Title.
2. Select the checkboxes below the Schedule Title to set the time to record video. One checkbox stands for 30 minutes of recording time. You can choose to assign the single checkbox repeatedly by using Click, or assign a period of time by using Slide. Alternately, you can quickly select/cancel the checkboxes by clicking **Select All** or **Delete All**.
3. When completed, click **Save**. The schedule profile will be added to the Schedule List.
4. To edit the schedule, select the desired schedule profile from the list, and then change the settings by using the **Modify** or **Remove** button.

## ■ Playback the Recording Files

1. Click the  button to display the Playback window.

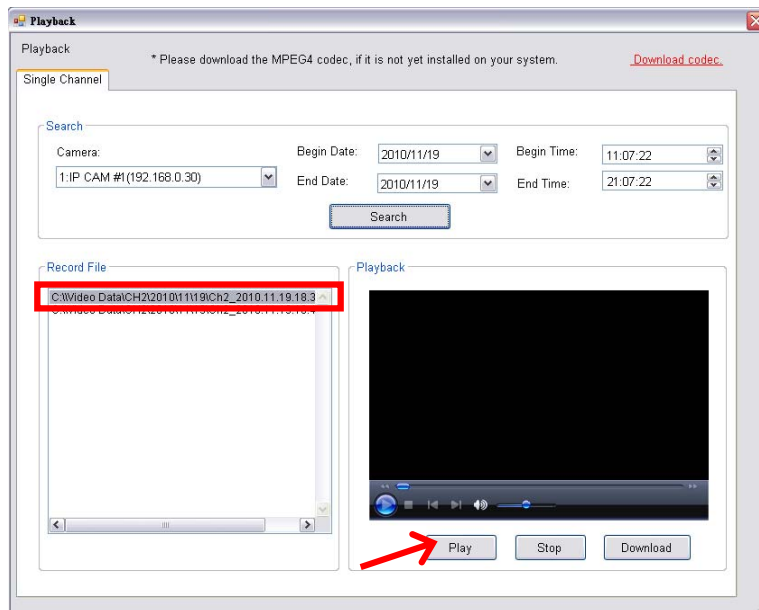


2. On the Playback window, set the conditions for search, such as selecting the camera and setting the begin/end date and begin/end time. When the search condition has been set, click **Search**.



The search result will be displayed in the Record File list.

3. To playback the video clip, select the desired file and click **Play**.




**NOTE** Codec is required for the system to play the video files. If the video clips cannot be displayed in the Playback window normally, click link on the screen.

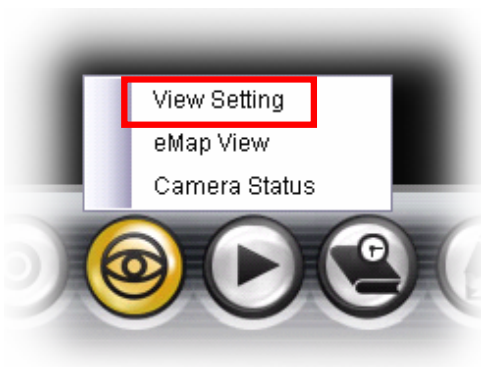
# CHAPTER 4

---

## CONFIGURING ULTRAVIEW PRO

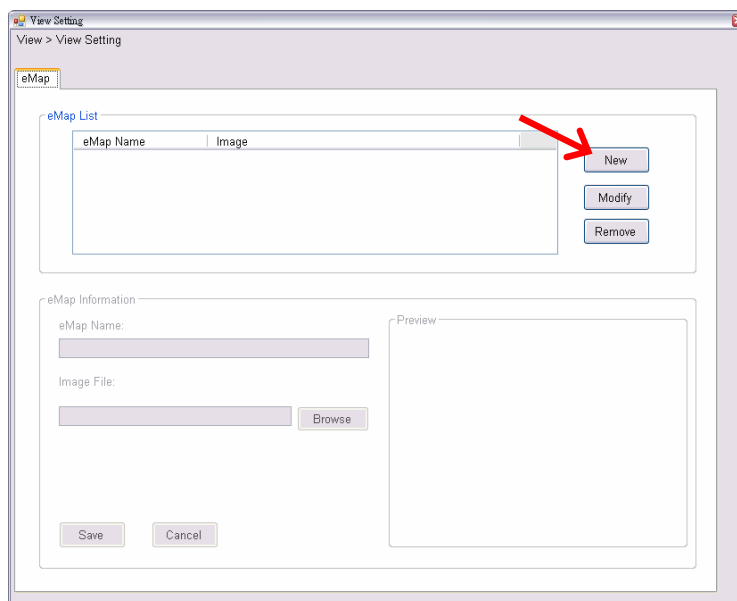
### 4.1 Configuring the eMap View Setting

Click the  button and select **View Setting** to configure the camera view setting of eMap mode.

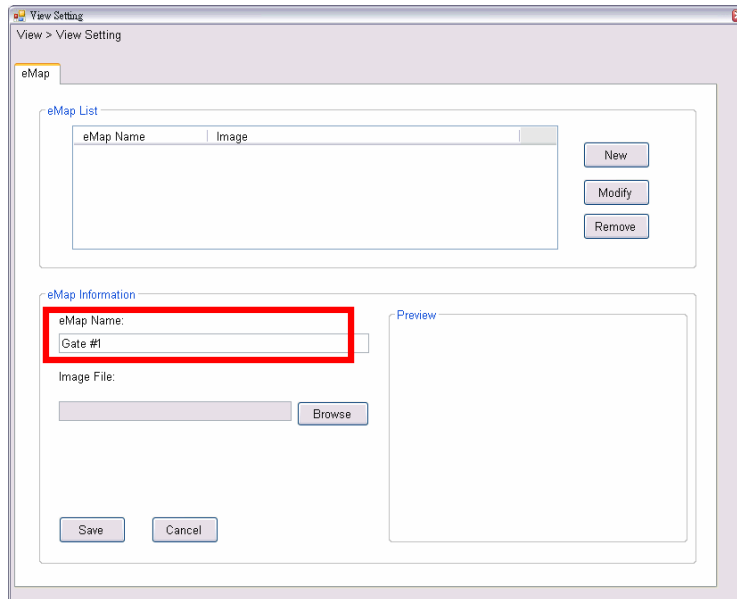


eMap refers to the geography and device scope of the UltraView Pro, which visually presents the devices in your security system. It uses a background of the area (e.g. a picture or a map) as the interface for monitoring.

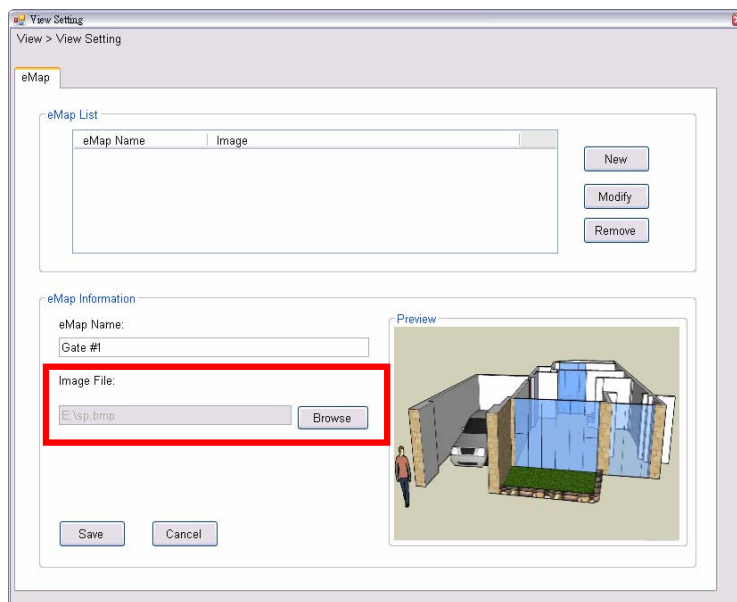
1. On the View Setting window, click **New**.



## 2. Enter the eMap Name.



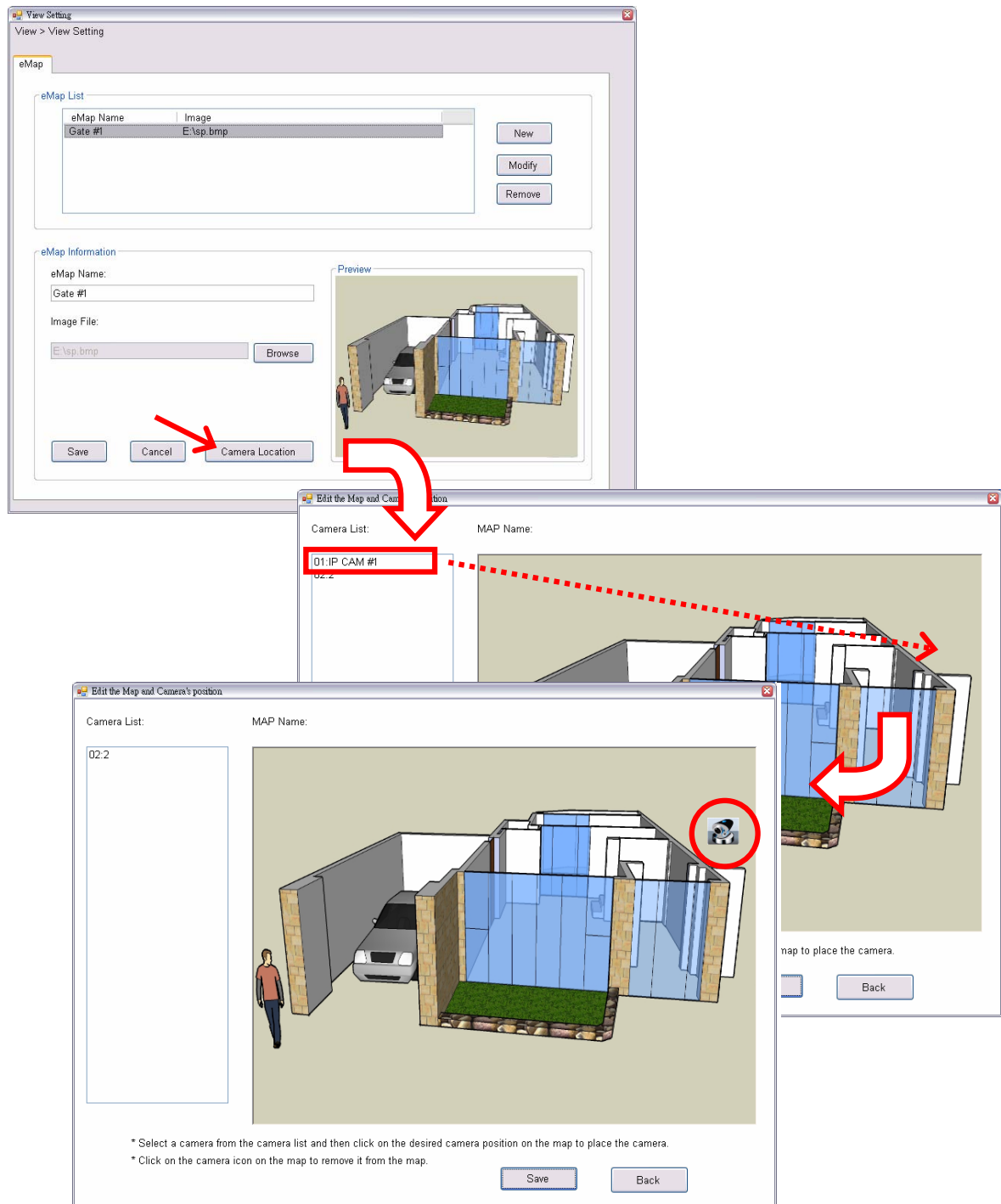
## 3. Click **Browse** to select a **Picture File** from your computer. The selected picture will be displayed in the Preview window.



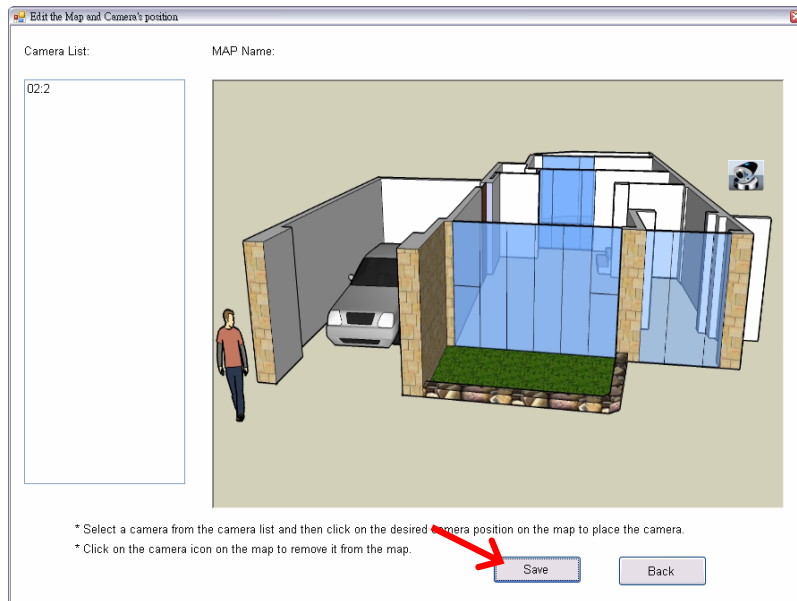
When completed, click **Save**.

4. On the following window, you can assign the camera position in the eMap.


Click the **Camera Location** button to display the Edit window. Select the camera from the Camera List, and then click the mouse on the desired position of the map. The camera icon will be displayed on selected position of the map.

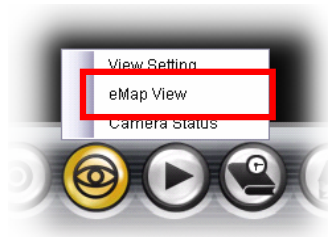


5. When completed, click **Save**.



6. To view from eMap:

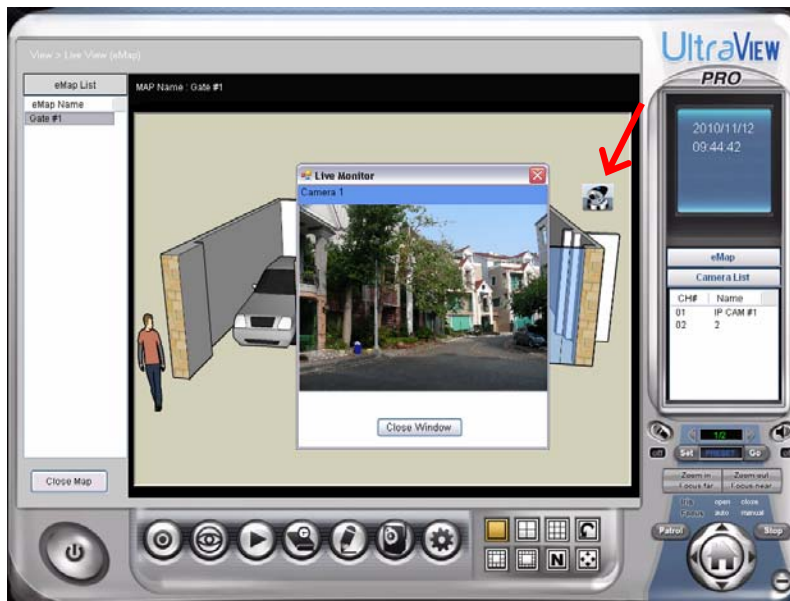
a. Click the  button and select **eMap View**.




b. Select the map from the eMap Name list.



- c. Click the camera icon, the camera window will then pop up to display the on-the-spot image.



## ■ Editing / Deleting the eMap

1. Click the  button and select **View Setting**.
2. **To edit the eMap:** In the eMap List, select the desired map and click **Modify**.


The map's information will be displayed, where you can change the map's information and then click **Save** when completed.

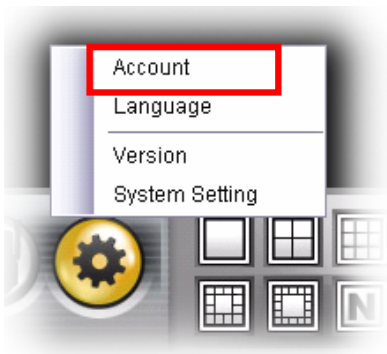
3. **To delete the eMap:** In the eMap List, select the desired one and click **Remove**.

The selected map will be removed from the list.

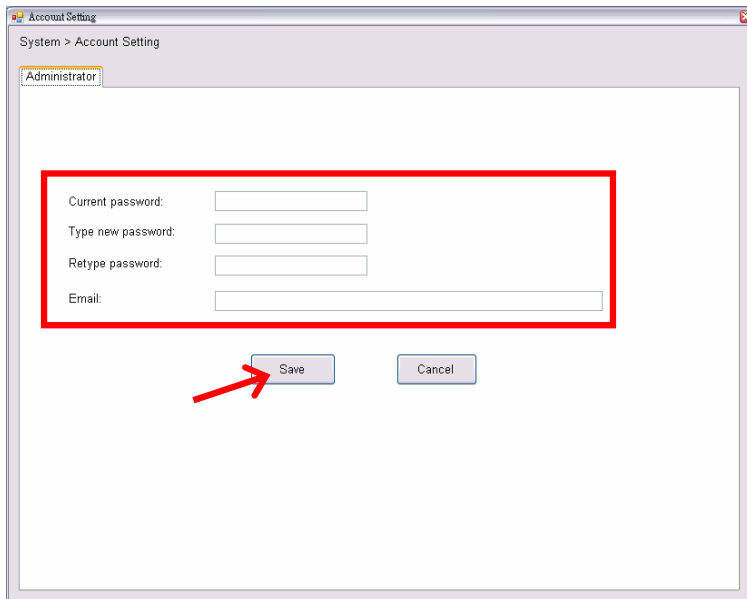
## 4.2 Configuring the System

### ■ User Management

Click the  button and select **Account** to change the administrator password for the system.




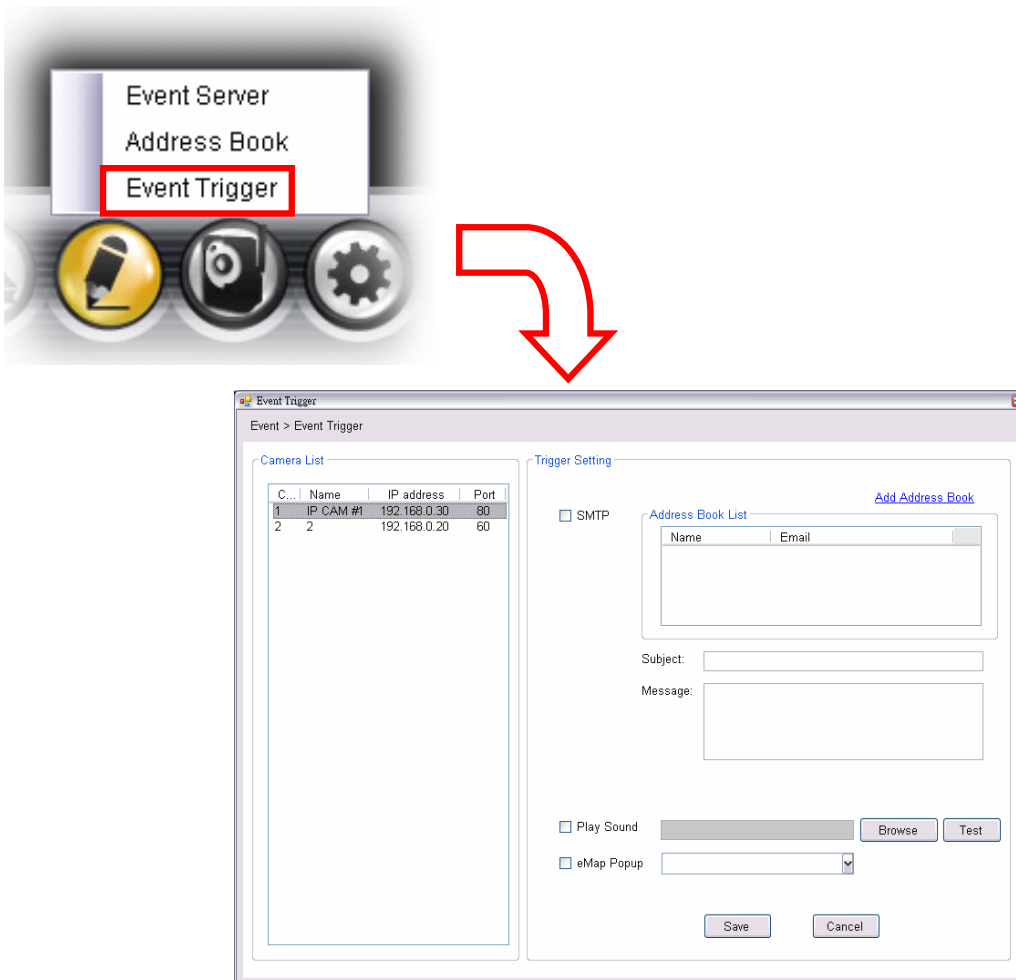
Enter the **Current password**, and then enter the new password twice (in the **Type new password** and **Retype password** boxes). When completed, click **Save**.

A screenshot of the 'Account Setting' dialog box. The title bar reads 'Account Setting' and the path is 'System > Account Setting'. The dialog shows a dropdown menu with 'Administrator' selected. Below this, there are four input fields: 'Current password:', 'Type new password:', 'Retype password:', and 'Email:'. A red rectangular box highlights these four fields. At the bottom of the dialog, there are two buttons: 'Save' and 'Cancel'. A red arrow points to the 'Save' button.

## 4.3 Event Configuration

### ■ Configuring Event Trigger


Click the  button and select **Event Trigger** to configure the trigger out function of the camera.

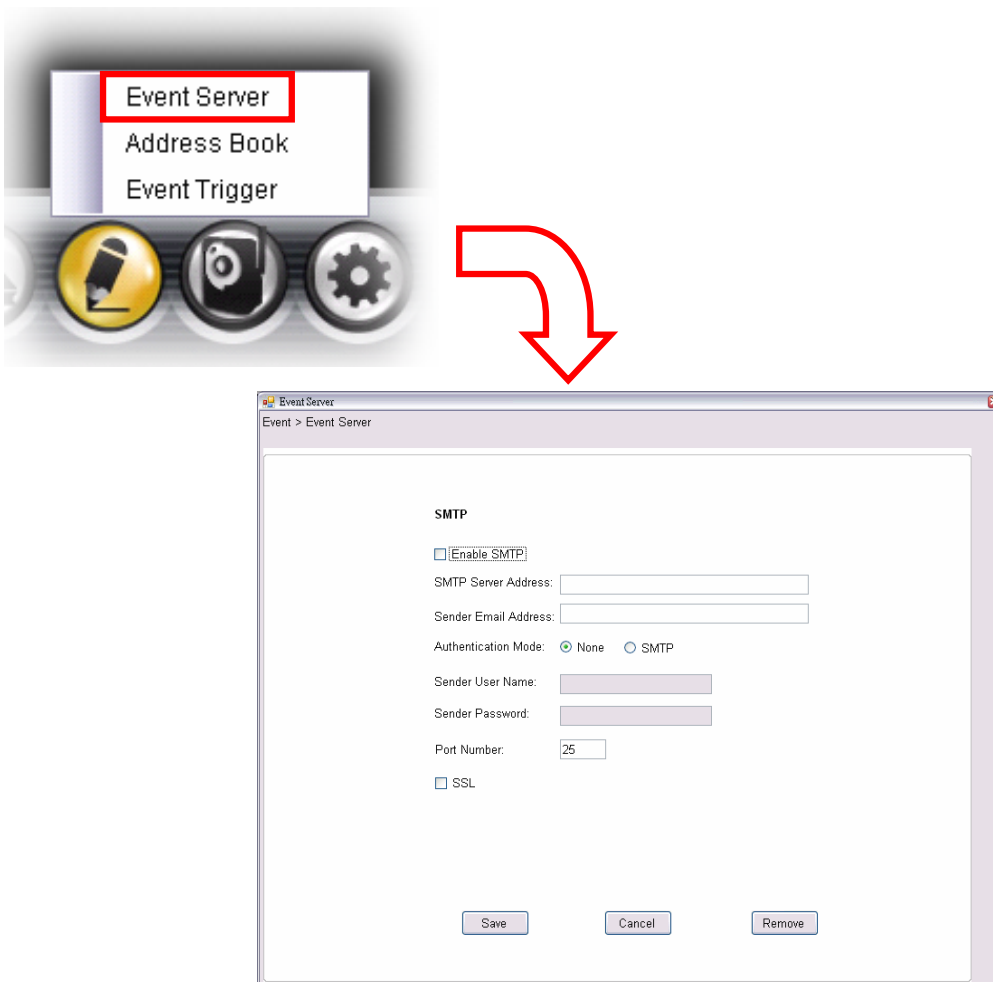


1. On the Event Trigger window, select the desired camera from the Camera List.
2. Do one of the following:
  - **SMTP:** Select this option and enter the Subject and Message, the system will send an email message to the selected user(s) in the Address Book List.

- **Play Sound:** Select this option select a sound file from the computer, so that the system will alarm by the sound while triggering out.
- **eMap Popup:** Select this option and select the eMap profile from the pull-down menu. The camera view of the eMap will be displayed while triggering out.

## ■ Setting up Event Server

Click the  button and select **Event Server** to configure the SMTP server, so that you can send emails that include still images as notification.




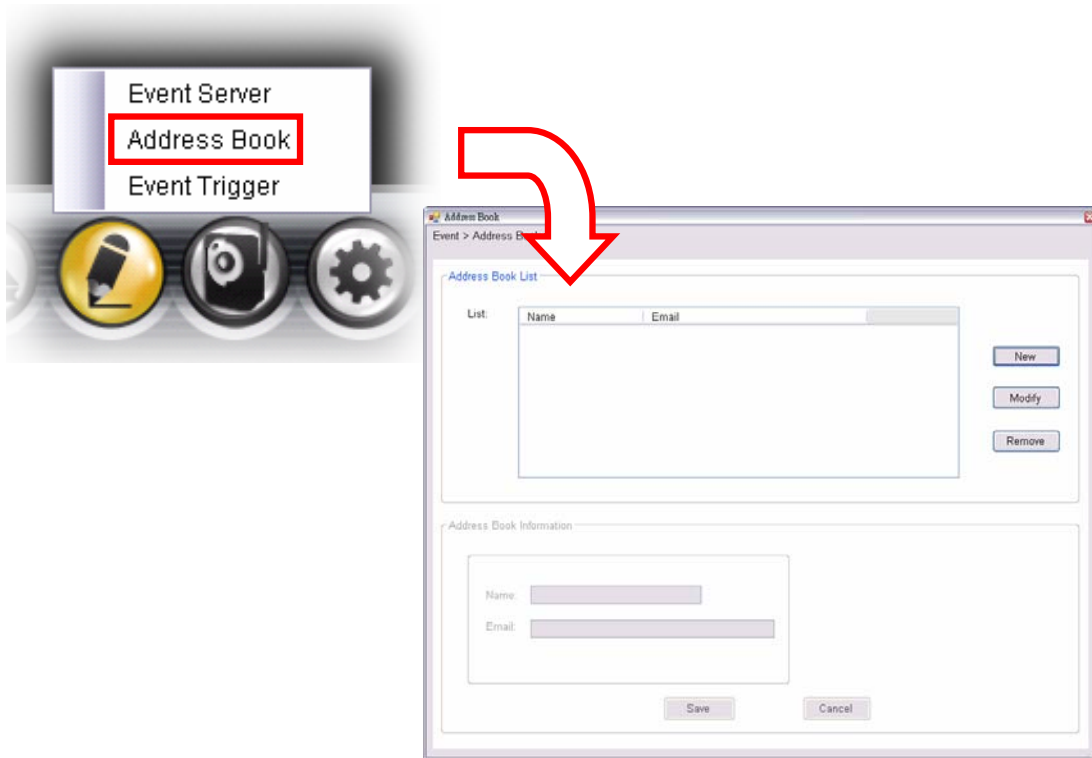
Select the **Enable SMTP** option to start the email service of the system. When you enable the service, you have to complete the following settings.

- **SMTP Server Address:** Enter the mail server address. For example, mymail.com.
- **Sender Email Address:** Enter the email address of the user who will send the email. For example, John@mymail.com.
- **Authentication Mode:** Select **None** or **SMTP** according to the mail server configuration.
- **Sender User Name:** Enter the user name to login the mail server.
- **Sender Password:** Enter the password to login the mail server.
- **Port Number:** Enter the port number used for the email server.
- **SSL:** If the mail server requires an encrypted connection, you should check the **SSL** option.

When completed, click **Save** and then select **OK**. The system will automatically start the Event Service.

## ■ Sending Notification to the User

Click the  button and select **Address Book** to assign the user to the Address Book of the camera. The user will receive a real-time notification from the system while triggering out.

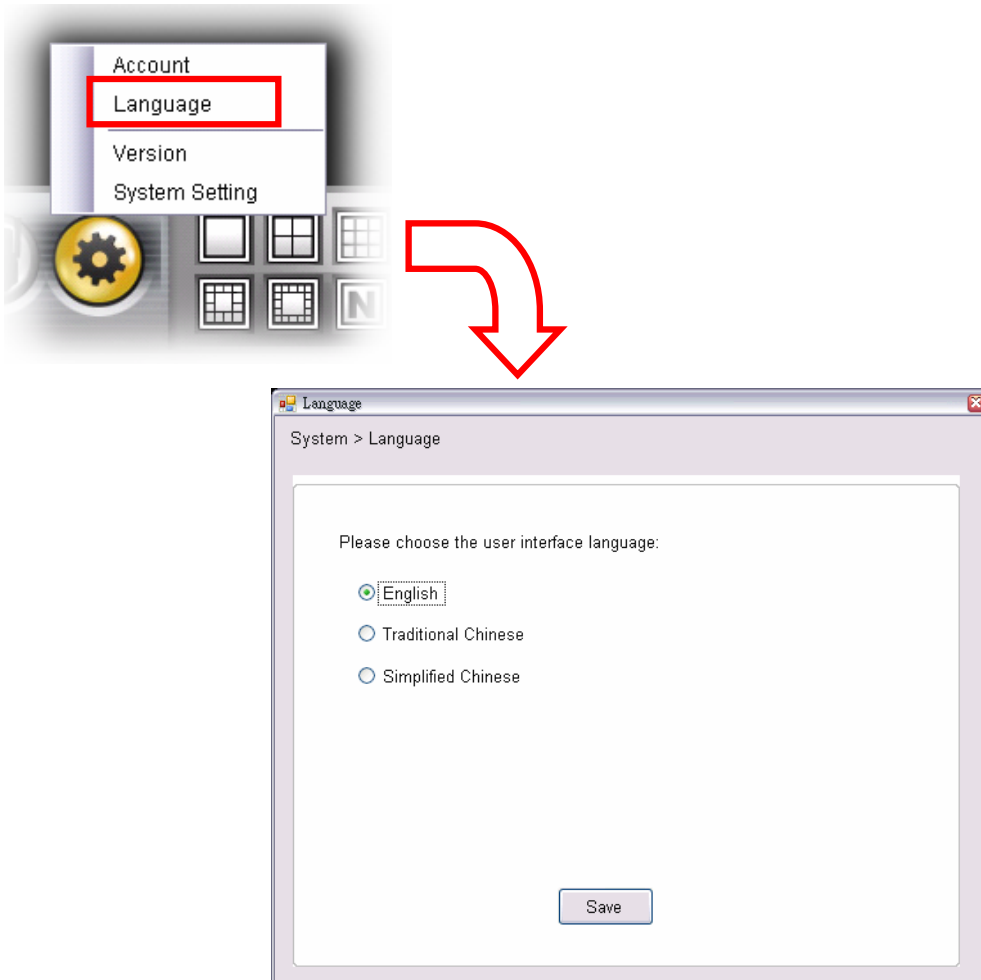


1. On the Address Book window, click **New**.
2. In the Address Book Information field, enter the **Name** and **Email** of the user.
3. When completed, click **Save**. The user will be displayed in the Address Book List.
4. **To edit the user:** In the Address Book List, select the desired user and click **Modify**. The user's information will be displayed, where you can change the user's information and then click **Save** when completed.
5. **To delete the user:** In the Address Book List, select the desired user and click **Remove**. The selected user will be removed from the list.


## 4.4 Changing System Language

Click the  button and select **language** to change the displayed system language.

On the Language screen, select the preferred language (**English**, **Traditional Chinese**, or **Simplified Chinese**) and click **Save**.



## 4.5 Terminating Operation

When you have finished operating, click the  button and select **Logout** to logout the system or **Close** to exit the program.



# CHAPTER 5

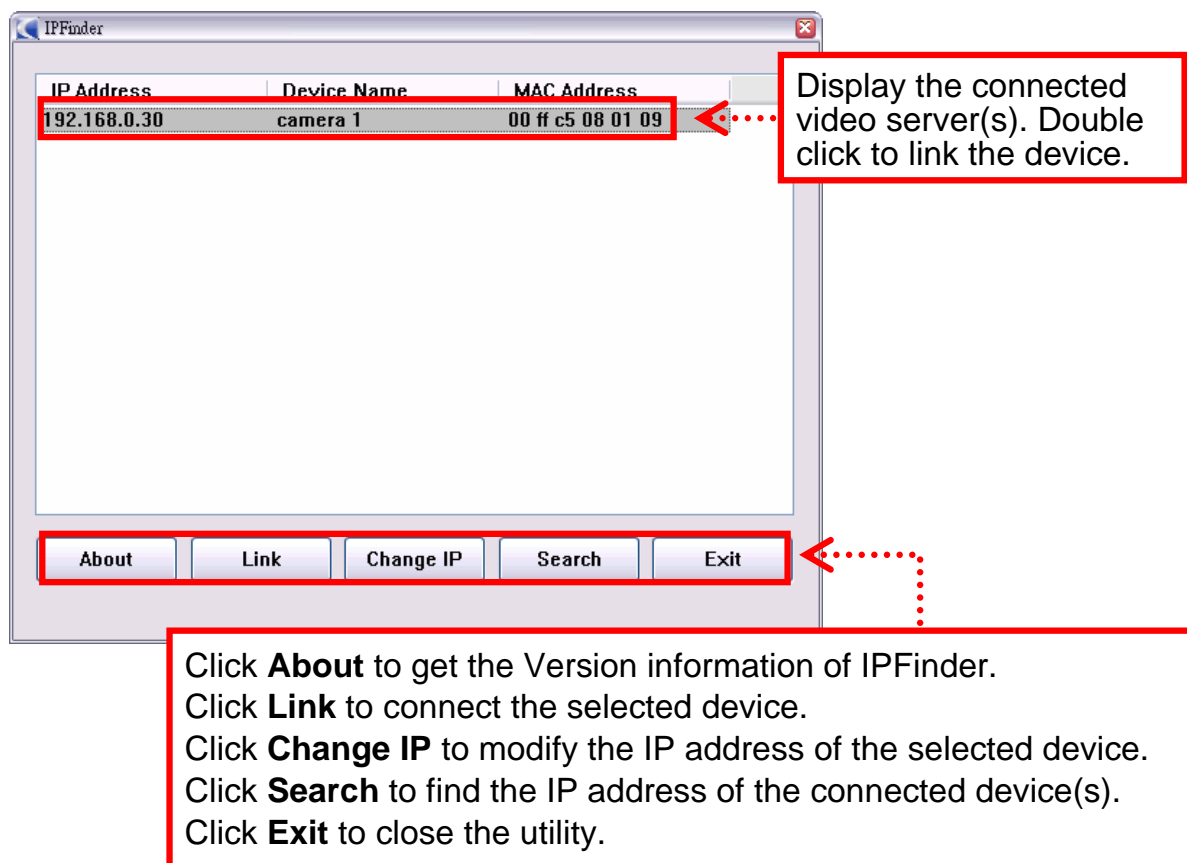
---

## USING IPFINDER

IPFinder allows you to easily search the device, such as the Internet camera and video server, within your network.

1. Click **Start** → **Programs** → **UltraView Pro** → **IPFinder**.

Alternatively, you can start the program by double-clicking the program icon on the desktop of your computer.



2. Once you get the IP address of the device, launch the Web browser or UltraView Pro to access your device.